

Accelerate Education

BROWSER

- Download Firefox or Chrome
- Enable JavaScript
- Accept 3rd-Party Cookies
- Disable Pop-Up Blockers (*toolbars blockers too*)

PLUG-INS

- Adobe Acrobat Reader
- Flash Player 10
- Shockwave Player
- Java 2 Runtime Environment
- WINDOWS (pc)- Install Windows Media Player
- MAC (apple) - Install QuickTime
- MAC (apple) - install Flip4Mac

SYSTEM

- Resolution: 1024 x 768 (minimum) 1280 x 1024 (optimum)
- Internet Connection: High Speed (Broadband) (1.5 MB or higher)
- Operating Systems:
 - Windows 7, Windows XP, Windows Vista
 - MAC OSX Version 10.5.4 or later
- Audio: Speakers and Microphone

SOFTWARE

- Word Processing Software (Word, Excel, PowerPoint)
- Microsoft Office (2007 or higher optimum, older versions can download the compatibility pack)
- Free Options
 - Open Office
 - Google Docs
- Skype (synchronous teacher support)
- Audacity (create recorded audio files)

APEX Learning

Network Configuration

This page summarizes the required and supported network configurations to access Apex Learning® digital curriculum. This information is intended for network administrators.

Bandwidth

A suitable Internet connection is required. This connection must have appropriate bandwidth taking into account:

- The number of concurrent users
- Other network applications (e.g. VOIP)
- Current bandwidth utilization
- Varying usage habits

Access

Firewalls, content filters, and other network infrastructure must allow connections to the following ports and domains:

- apexlearning.com
- apexvs.com
- correlation.edgate.com
- Port TCP/80
- Port TCP/ 443 (HTTPS User Login)
- A defined set of 3rd party URLs (provided upon request)

Content Caching

Content from the following domains may be cached, but should be refreshed weekly:

- media.apexlearning.com
- assets.apexlearning.com
- acecontent.apexlearning.com

Content from the following domains must not be cached:

- apexvs.com
- courses.apexlearning.com

HTTP 1.1 Support

- Apex Learning supports HTTP 1.1 (RFC 2616). This protocol is optional, but recommended.
 - Proxies sending HTTP 1.1 requests must be either compliant or conditionally compliant with RFC 2616. If a non-compliant proxy cannot be made compliant, then connections to Apex Learning courses must either:
 - Bypass the proxy
 - Use only the HTTP 1.0 protocol

HTTPS Support

Apex Learning supports HTTPS (Hypertext Transfer Protocol Secure) to provide encrypted communication and secure identification.

APEX Learning cont.

Workstation Configuration

This page summarizes the required and supported workstation configurations to access Apex Learning® digital curriculum.

Each Apex Learning user must have access to an appropriately configured workstation with a suitable Internet connection. Apex Learning requires and supports the following workstation configurations:

Operating Systems Microsoft Windows 7 Microsoft Windows XP SP 2 or higher Microsoft Windows Vista Apple Mac OS X 10.4.11 (Tiger) Apple Mac OS X 10.5 (Leopard)	Display Resolution 800 x 600 pixels supported 1024 x 768 pixels recommended Color Depth 8 bits (256 colors) supported 16 bits (Highcolor) recommended
web Browsers Microsoft Internet Explorer 8.0 or higher Mozilla Firefox 7.0 or higher Apple Safari 5.0 or higher Google Chrome 18.0 or higher	Browser Plug-Ins Adobe Reader 6.0 or higher Adobe Flash Player 9.0.115 or higher Java Virtual Machine (Sun Java 1.5 or higher, recommended)
Firewall / Filtering Firewall and content filtering software must allow access to the following sites: apexlearning.com apexvs.com	Audio All Users Speakers or headphones World Language Courses Microphone Audio recording support
Word Processing Software capable of opening, modifying, and saving documents in Rich Text Format (RTF) is required.	Print (as appropriate) Printer Scanner Fax Multipage TIF Viewer

Edison Learning – 2014/2015

EdisonLearning eCourses perform optimally when computers used to access the platform meet minimum hardware and software specifications. While eCourses may function properly on lesser hardware/software, EdisonLearning can only commit to support when eCourses are delivered via clients meeting minimum standards (see table below).

Student Technology

To use EdisonLearning eCourses, a student must have:

- A computer that meets or exceeds the minimum required specifications - see specific hardware and software requirements below
- Access to a high-speed Internet connection
- The ability to record and save audio files for foreign language courses

Recommended, but not required, items:

- Headset with microphone
- Printer

Laptop or desktop computer specifications

Operating System Options	Required Applications	Supported Browsers	Minimum Hardware Specifications
PC Users			
<ul style="list-style-type: none"> • Windows XP • Windows 2003 • Windows Vista • Windows 7 • Windows 8 	<ul style="list-style-type: none"> • Apple QuickTime browser plug-in • Adobe Flash Player 10 • Adobe Reader (or other PDF viewer) • Java SDK required for Java course 	<ul style="list-style-type: none"> • Firefox 4 .11 to Firefox 20 • Internet Explorer 9 and 10 (Must have Windows 7 or higher) • Chrome 9 to Chrome 26 	<ul style="list-style-type: none"> • 1.5 GHz CPU • 512 MB RAM • Monitor/screen with high-color (16 bit) display measuring 14.1" or larger, and at least 1024 x 768 resolution • Disk space: 100 MB • Built-in microphone and speakers • Integrated network card
Mac Users			
<ul style="list-style-type: none"> • OSX 10.5, 10.6, or 10.7 	<ul style="list-style-type: none"> • Apple QuickTime browser plug-in • Adobe Flash Player 10 • Adobe Reader (or other PDF viewer) • Java SDK required for Java course 	<ul style="list-style-type: none"> • Safari 5 and Safari 6 • Chrome 9 to Chrome 26 	<ul style="list-style-type: none"> • Intel-based Mac or Mac with a PowerPC G5, G4, or G3 processor and built-in FireWire

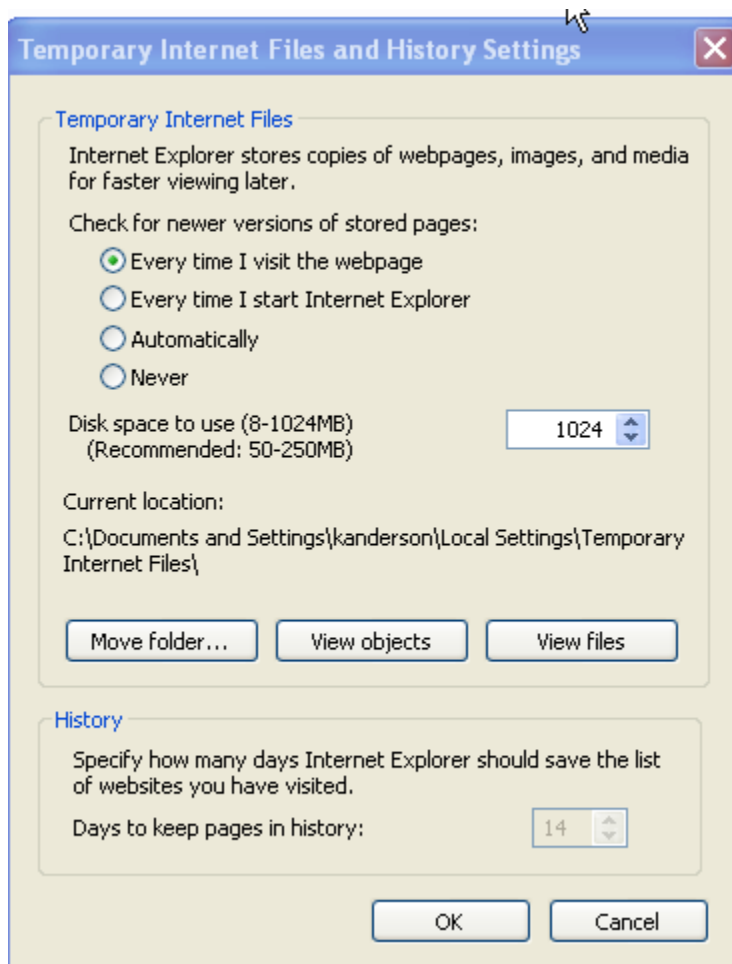
Edison Learning cont.

Browser Refresh Settings

Users' Web browsers must be set to refresh every time a page is viewed (instead of loading a page from a stored cache) in order for the system to correctly display updated information.

To do this in Internet Explorer:

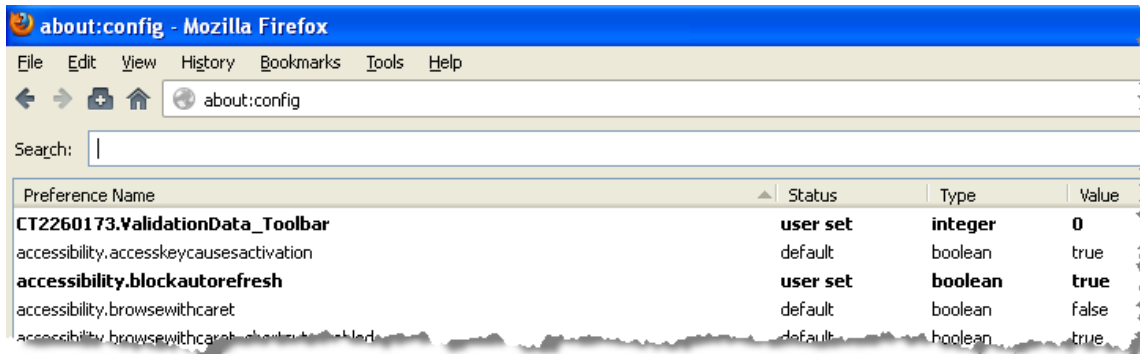
1. In Internet Explorer, go to **Tools > Internet Options > General tab > Browsing History area > Settings** button.
2. Make sure the "Every time I visit the webpage" option is selected:



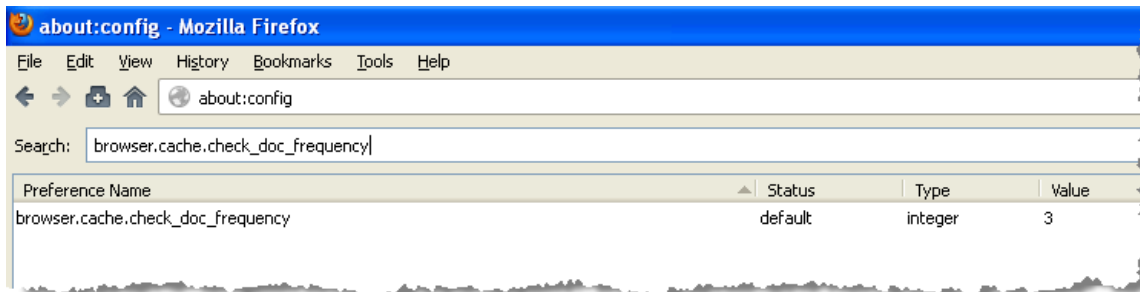
3. Click **OK**.

To do this in Firefox:

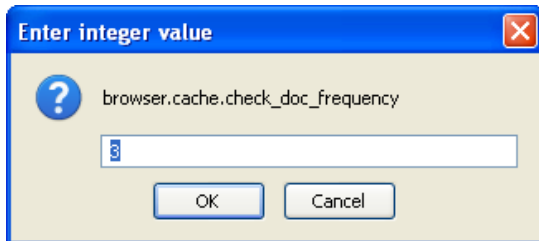
1. Enter **about:config** in the Firefox address bar and press **Enter**.
2. A list of browser configuration preferences appears:



3. Enter **browser.cache.check_doc_frequency** in the Search field and press **Enter**.
4. The preference appears:



5. Double click the preference. A popup window appears:



6. Enter **1** and click **OK**. This forces Firefox to always check for newer versions of pages when reloading them.
7. Close Firefox. The next time you open it, it will refresh Web pages every time they are called, instead of cached versions.

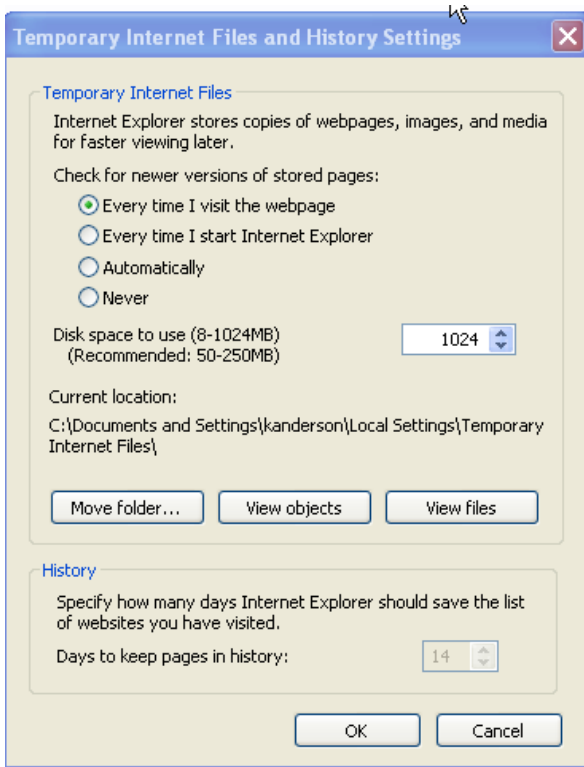
Firewall IP Addresses and Ports

Your firewall must be open to the following Internet addresses in order to access our content:

- <http://208.69.168.84>
- <http://208.69.168.86>
- <http://208.69.168.97>
- <http://208.69.168.98>
- <http://208.69.169.138>
- <http://208.95.242.6>
- External IP Range <http://208.67.121.1> - <http://208.67.121.255> (cont. on next page)

- <http://courseplayer.edisonlearning.com>
- any domain ending in **.edisonlearning.com**
- and domain ending in **.provostacademy.com**

Your browser, either Internet Explorer or Firefox, must be set to refresh pages every time they are viewed. In Internet Explorer, click **Tools > Internet Options > General tab**. In the browsing history section, click the **Settings** button. Make sure the "Check for newer versions of stored pages" item is set to "Every time I visit the webpage".



If you have any questions or problems, please contact the eQUIP Academy Services offices of BLaST IU 17.